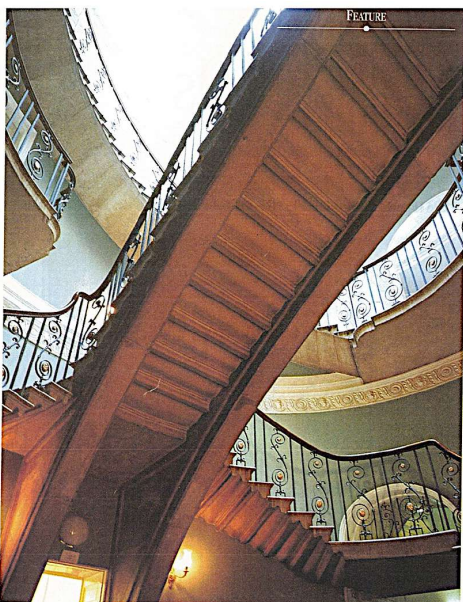
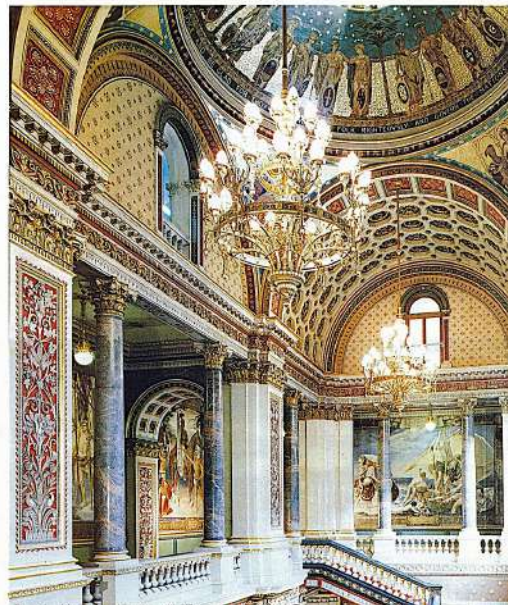


BRITISH HERITAGE

Couper Collection, British Heritage magazine Millennium Special Issue 2000.

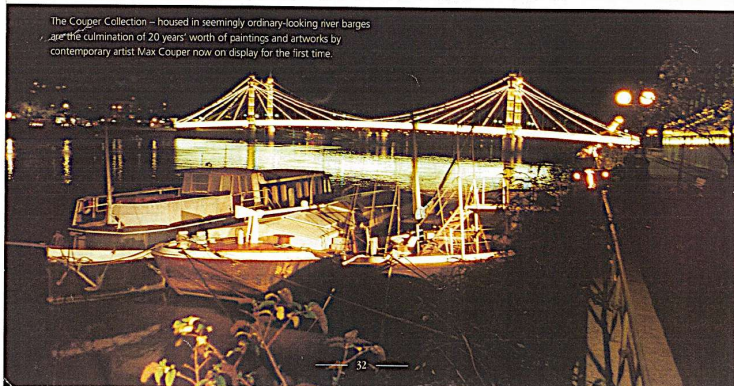


Feature
String of Pearls
Some unseen jewels of London open their doors for the first time to the public
 Story: Robin Ballance. Photography Courtesy: Goldsmiths Livery Company, Foreign & Commonwealth Office, Somerset House, The Couper Collection, Old Royal Naval College.



The South Block Navy Staircase at Somerset House

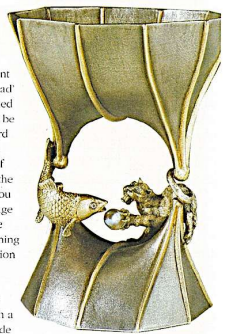
As the celebrations for the dawn of the new millennium abate, organisations whose involvement include such areas as democracy, religion and knowledge and learning, to name but a few, are using the opportunity to allow the general public a chance to commemorate numerous achievements of the last 1,000 years. 67 places of interest are opening up throughout the year, many for the first time ever, allowing access to sections of their buildings never before previously seen. Exhibitions illustrating what these different establishments do and why, are being mounted in collaboration with each other; specially commissioned artists are providing a fresh perspective on the roles and meanings of these companies. Situated along the River Thames and never more than a ten minute stroll from its banks, these world-famous landmarks create the 'String of Pearls' at the heart of our great capital from Greenwich to Kew, threaded together by a network of Thames paths and new riverboat services. For example, this Festival will give the public the chance to discover the Couper Collection – the accumulation of twenty years' worth of artworks displayed in its original context aboard the artist's barge moored on the South Shore close to Albert Bridge. This is the first opportunity the public will have of seeing Max Couper's work, a Thames-based contemporary artist and mariner,



The Couper Collection – housed in seemingly ordinary-looking river barges – are the culmination of 20 years' worth of paintings and artworks by contemporary artist Max Couper now on display for the first time.



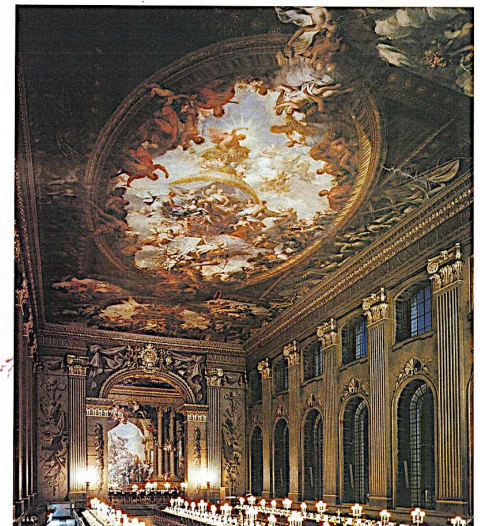
The Livery Hall, Goldsmiths' Company host of the "Treasure of the Twentieth Century" featuring the exquisite Amity Cup (right).

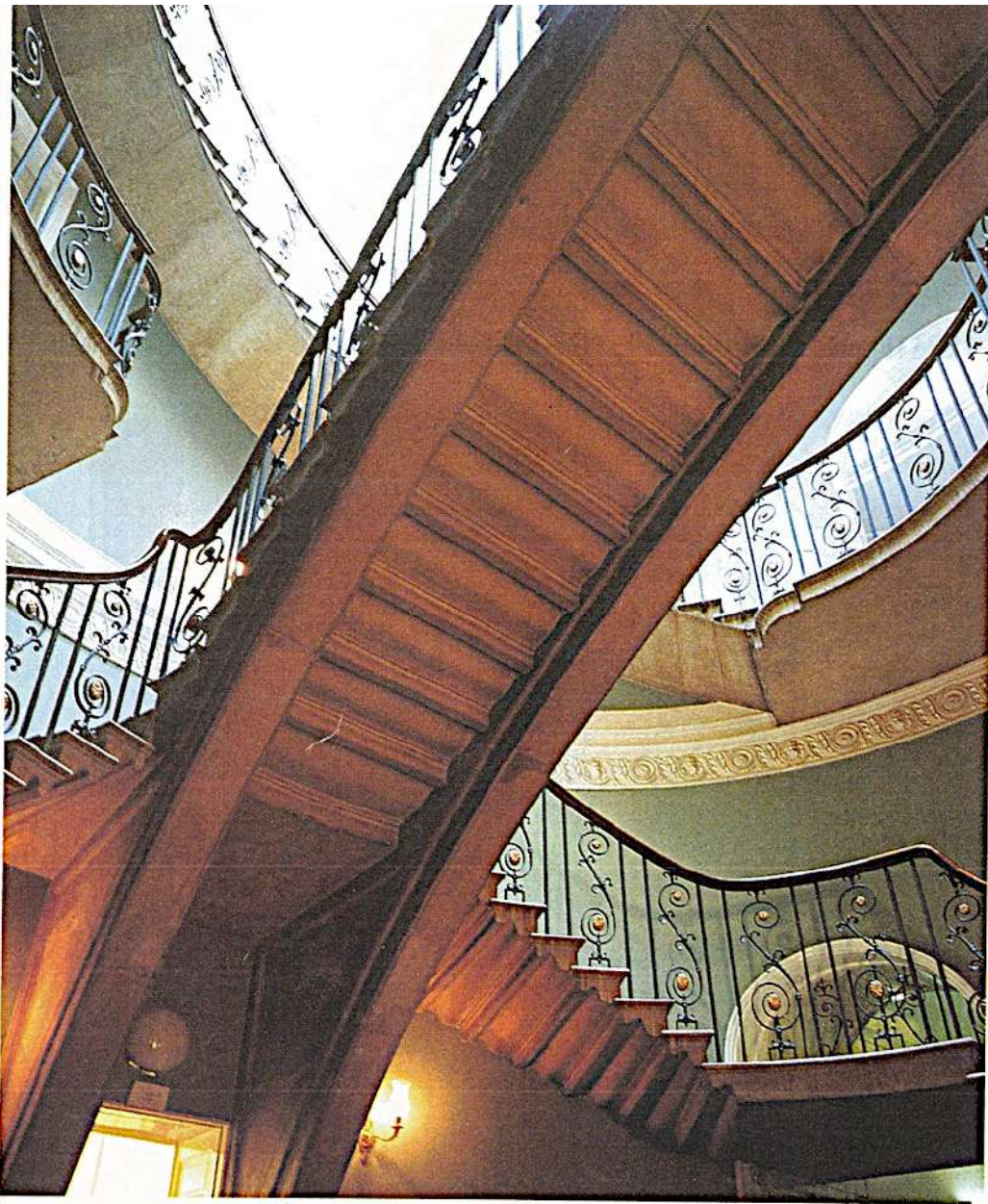


and the Royal Courts of Justice. There will be a dramatic re-enactment of the 'Penn and Mead' trial, which established the right of jurors to be staged inside the Lord Chief Justice's Court. This is just a taster of what is available in the coming months. If you would like the 72-page Programme of all the year's events, containing full details of admission arrangements, times and prices, please send your name and address together with a cheque for £1.50 made payable to 'String of Pearls' to: London String of Pearls, PO Box 967, Aylesford, Kent ME20 7UP. Alternatively, you can contact the String of Pearls Festival Programme Hotline on 0906 944 2000 (calls cost 10p per minute).

presented in its original context. A series of discussions and river tours to complement this exhibition are being staged and there is even the performance of a barge-based opera, in conjunction with the Royal Opera House. All this leads up to the unveiling of a series of new mobile sculptures along the Thames designed to refocus public attention to London's greatest open space. Lambeth Palace, home to the Archbishop of Canterbury since 1197, is opening to the public for the first time. With organised tours of such historic rooms as the Crypt, the Guard Room and the Chapel giving visitors the chance to discover the role that the Archbishop of Canterbury has played in the past. The Goldsmiths' Company, one of the twelve great Livery Companies of the City of London, home to the Assay Office, which tests and marks precious metals, will feature the company's unique collection of silver, jewellery and art medals on display for the first time in this magnificent hall. Designed by George Gilbert Scott, The Foreign and Commonwealth Office in Whitehall is staging Twelve Open Days, a chance to find out what the FCO does and to view its otherwise unseen exquisite interiors. The legal profession is well-represented with open days and tours around the four Inns of Court, Lincoln's Inn, Inner Temple, Middle Temple and Gray's Inn

The Painted Hall at the Old Royal Naval College, Greenwich – a restoration project using the latest technology and part of the String of Pearls Millennium Festival Celebrations





The South Block Navy Staircase at Somerset House

As the celebrations for the dawn of the new millennium abate, organisations whose involvement include such areas as democracy, religion and knowledge and learning, to name but a few, are using the opportunity to allow the general public a chance to commemorate numerous achievements of the last 1,000 years. 67 places of interest are opening up throughout the year, many for the first time ever, allowing access to sections of their buildings never before previously seen. Exhibitions illustrating what these different establishments do and why, are being mounted in collaboration with each other; specially commissioned artists are providing a fresh perspective on the roles and meanings of these companies. Situated along the River Thames and never more than a ten minute stroll from its banks, these world-famous landmarks create the "String of Pearls" at the heart of our great capital from Greenwich to Kew, threaded together by a network of Thames paths and new riverboat services. For example, this Festival will give the public the chance to discover the Couper Collection – the accumulation of twenty years' worth of artworks displayed in its original context aboard the artist's barge moored on the South Shore close to Albert Bridge. This is the first opportunity the public will have of seeing Max Couper's work, a Thames-based contemporary artist and mariner,

The Couper Collection – housed in seemingly ordinary-looking river barges are the culmination of 20 years' worth of paintings and artworks by contemporary artist Max Couper now on display for the first time.



Some unseen jewels of London open their doors for the first time to the public

Story: Robin Ballance. Photography Courtesy: Goldsmiths Livery Company, Foreign & Commonwealth Office, Somerset House, The Couper Collection, Old Royal Naval College.

As the celebrations for the dawn of the new millennium abate, organisations whose involvement include such areas as democracy, religion and knowledge and learning, to name but a few, are using the opportunity to allow the general public a chance to commemorate numerous achievements of the last 1,000 years. 67 places of interest are opening up throughout the year, many for the first time ever, allowing access to sections of their buildings never before previously seen. Exhibitions illustrating what these different establishments do and why, are being mounted in collaboration with each other; specially commissioned artists are providing a fresh perspective on the roles and meanings of these companies. Situated along the River Thames and never more than a ten minute stroll from its banks, these world-famous landmarks create the "String of Pearls" at the heart of our great capital from Greenwich to Kew, threaded together by a network of Thames paths and new riverboat services.

For example, this Festival will give the public the chance to discover the Couper Collection – the accumulation of twenty years' worth of artworks displayed in its original context aboard the artist's barge moored on the South Shore close to Albert Bridge. This is the first opportunity the public will have of seeing Max Couper's work, a Thames-based contemporary artist and mariner,



The Livery Hall, Goldsmith's Company host of the "Twentieth Century" featuring the exquisite Amit

presented in its original context. A series of discussions and river tours to compliment this exhibition are being staged and there is even the performance of a barge-based opera, in conjunction with the Royal Opera House. All this leads up to the unveiling of a series of new mobile sculptures along the Thames designed to refocus public attention to London's greatest open space.

Lambeth Palace, home to the Archbishop of Canterbury since 1197, is opening to the public for the first time. With organised tours of such historic rooms as the Crypt, the Guard Room and the Chapel giving visitors the chance to discover the role that the



The Couper Collection barges — interior view of the Studio Barge, a 250-ton converted former Thames cargo barge. View of the variable sculptural installation, Split Track.